

## **Bell shaped anti vibration mount with square base**



LAIROSI®

### **Main features**

SUCOMA bell-shaped mounts with square bases are anti-vibration devices designed to dampen vibrations and noise, with a bell-shaped structure and a solid square base. Made of natural rubber and galvanized steel, they offer optimal stability and resistance. Ideal for industrial machinery, engines, and heavy systems, they ensure secure and durable fastening. Available in different hardnesses, they adapt to various applications, ensuring reliable performance in a robust and compact design.

### **Features and Use**

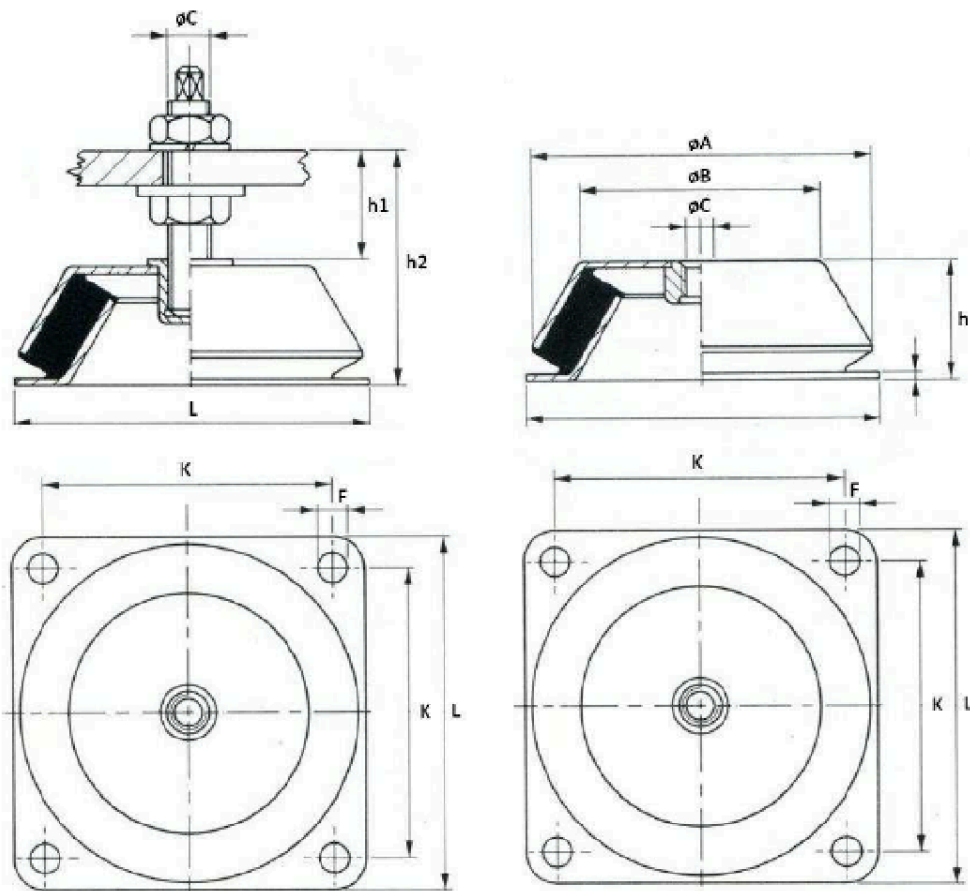
For loads of 800 daN per mount, a special Sucoma with an anti-rebound pad is provided. In this case, it is not necessary to mount two Sucoma mounts opposite each other.

### **Recommended uses:**

- Diesel and gasoline engines.
- Compressors.
- Various machinery.

Assembly is carried out using bolts.

The elastomer used is a natural compound. The metal parts are made of steel protected by painting or galvanizing.



*Forniti senza perno*

Article	øA	øB	øC	K	L	H	F	h 1	h 2	s	Load		
15016/D	150	110	M16	132	168	55	12.5	80	135	4	600/45Sh	1326/60Sh	2014/70Sh
15020/D	150	110	M20	132	168	55	12.5	80	135	4			
10888	100	72	M12	88	108	40	9			3	2000/45Sh	5050/55Sh	6818/65Sh
17718/D	177	125	M20	150	184	63	13			4,5	756/45Sh	1326/60Sh	2014/70Sh
	177	125	M20	150	184	67	13	80	147	4,5			